



Think **Gypsum** - Think **Buildon**



GYPSUM PLASTER ONE COAT

www.buildon.co.in



What Sets Us Apart from the Rest?

Buildon is one of the leading manufacturers and importers of Gypsum. At our factory, we produce the finest quality Gypsum plaster globally. Being pure white and with hardness over 40% than any other Gypsum in the Indian market, it stands as a world-class product, the highest grade in the construction arena.

How Are We 'Gypsumizing'... A Bird's Eye View

Buildon, a Mumbai-based company, provides world-class Gypsum across major cities in India. Recognizing the significant gap between demand and supply for quality Gypsum plaster, Buildon has established a vast network of sales offices throughout the country to ensure uninterrupted and timely supply to all customers. With our own sales offices near major seaports in India, we guarantee faster delivery of imported Gypsum to your doorstep. Our products are manufactured using advanced technology, achieving desired excellence under a strict quality control system. We adhere to extremely high international quality management systems in managing our production.

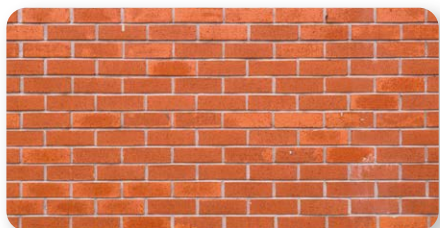
Who Are We Reaching

Buildon supplies quality Gypsum to many reputed BUILDERS, ARCHITECTS, PROJECT CONSULTANTS, AND CONTRACTORS, adding value to their prestigious projects.

Buildon Gypsum Plaster One Coat

BUILDON Gypsum Plaster is produced from the light powder-density rock sourced from the purest mines. The advantage of our Gypsum is that it is the highest grade, pure white in colour, and 40% harder than any other Gypsum Plaster available in the Indian market. This Gypsum plaster can be applied easily and directly on all surfaces without the need for sand/cement/plaster on the walls. The coverage in a 25Kg bag is 20 Sq. Ft. with a thickness of 12mm. The Fineness of 200 Mesh and purity over 90% ensure the best atomic bond and an absolute mirror finish.

Applied on



Brick Wall



Block Wall



RCC Structure



Application of Gypsum



The surface must be firm, clean, dry & free of dust.



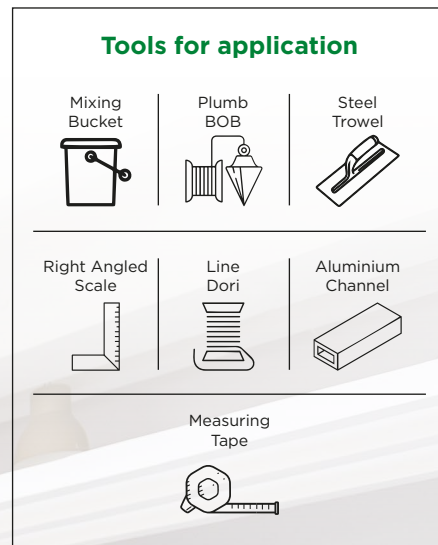
Important properties like soluble salt content, thermal characteristics, shrinkage, strength, suction bonding properties etc., of the background that is to be plastered should be evaluated before application.



Gypsum plaster one coat can be applied directly on most surfaces like Brick walls/Fly ash brick/Siporex blocks/Concrete surfaces/Sand cement plaster walls etc.



A suitable fixture can be fixed after the plaster has been set. You can put up fixtures of varying weights. Smaller ones can be supported by using steel hooks and pins, while heavier frames and objects can be accommodated with plugs and screws or suitable fixtures, adequately penetrated into the background to ensure a firm hold.



Direction For Use



The right way to mix is to add the powder to water, not water to the powder. The ratio of the powder should be 1:1.3.



Avoid mixing more powder that can be used within 12 minutes - 15 minutes.



Do not temper or mix fresh material once a mix has started to set.



After taking the required amount of plaster, always fold the open end, to protect the plaster from moisture.



The setting time cannot be altered by diluting the mixture. For a longer setting time, the BUILDON retarder should be added.

Features



Single coat application



Can be applied directly on all walls/surfaces



Zero maintenance



Pure white in colour



Very smooth finish



Free from shrinkage cracks



Compatible with all types of paints

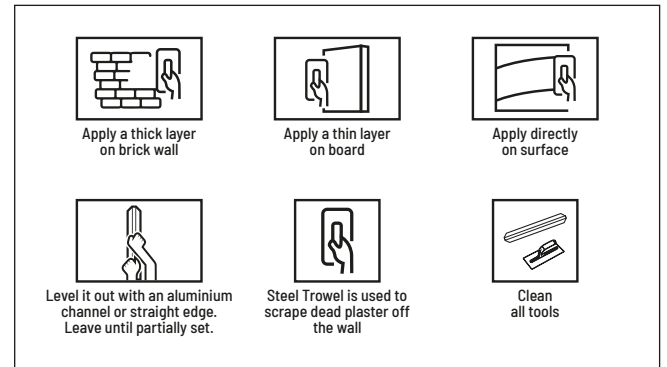


Technical Specifications

Purity	90% and above
Whiteness	92%
Fineness Mesh	Mesh 200, Residue 2%
Setting Time	Initial 12 - 15 min. Final 24 - 30 min.
Compressive Strength (Dry)	20 N/mm ²
Coverage at 12mm thickness	20 Sq. ft.
Dry Bulk Density	750 Kg / m ³
Standard Compliance	IS 2547-1 Part 1 & Part 2
Shelf Life	8 months

Storage & Handling: Gypsum Plaster One coat is supplied in 25kg bags. The Bags can be stacked on a Pallet in a dry area. Do not use hooks or any sharp tools to carry the bags from one location to another.

Application Process



Approved by



Buildon Plasters Pvt. Ltd.

3B, Mapkhan Compound, Mapkhan Nagar, Marol Maroshi Road, Andheri (E), Mumbai-400 059. Ph: 022 - 29200565/29200569

E-Mail: info@buildon.co.in | **Web:** www.buildon.co.in

Maharashtra | Karnataka | Tamil Nadu | Telangana
West Bengal | Kerala | Gujarat | Delhi | Goa | Madhya Pradesh