



Think **Gypsum** - Think **Buildon**



## IMPORTED GYPSUM PLASTER



[www.buildon.co.in](http://www.buildon.co.in)

## What Sets Us Apart from the Rest?

Buildon is one of the leading manufacturers and importers of Gypsum. At our factory, we produce the finest quality Gypsum plaster globally. Being pure white and with hardness over 40% than any other Gypsum in the Indian market, it stands as a world-class product, the highest grade in the construction arena.

## How Are We 'Gypsumizing'... A Bird's Eye View

Buildon, a Mumbai-based company, provides world-class Gypsum across major cities in India. Recognizing the significant gap between demand and supply for quality Gypsum plaster, Buildon has established a vast network of sales offices throughout the country to ensure uninterrupted and timely supply to all customers. With our own sales offices near major seaports in India, we guarantee faster delivery of imported Gypsum to your doorstep. Our products are manufactured using advanced technology, achieving desired excellence under a strict quality control system. We adhere to extremely high international quality management systems in managing our production.

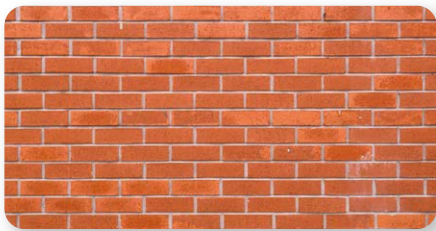
## Who Are We Reaching

Buildon supplies quality Gypsum to many reputed BUILDERS, ARCHITECTS, PROJECT CONSULTANTS, AND CONTRACTORS, adding value to their prestigious projects.

## Buildon Imported Gypsum Plaster

BUILDON Gypsum Plaster is produced from the light powder-density rock sourced from the purest mines. The advantage of our Gypsum is that it is the highest grade, pure white in colour, and 40% harder than any other Gypsum Plaster available in the Indian market. This Gypsum plaster can be applied easily and directly on all surfaces without the need for sand/cement/plaster on the walls. The coverage in a 25Kg bag is 20 Sq. Ft. with a thickness of 12mm. The Fineness of 150 Mesh and purity over 85% ensure the best atomic bond and an absolute mirror finish.

## Applied on



Brick Wall



Block Wall



RCC Structure



## Application of Gypsum



The surface must be firm, clean, dry & free of dust.



Important properties like soluble salt content, thermal characteristics, shrinkage, strength, suction bonding properties etc., of the background which is to be plastered, should be evaluated before application.



Imported Gypsum Plaster can be applied directly on most of the surfaces like Brick Wall / Fly Ash Brick / Siporex Blocks / Concrete Surface / Sand Cement Plaster wall etc.



Once the plaster sets, install fixtures - utilize hooks and pins for lighter items, and employ plugs & screws for heavier objects, ensuring a secure grip.

### Tools for application

Mixing Bucket



Plumb BOB



Steel Trowel



Right Angled Scale



Line Dori



Aluminium Channel



Measuring Tape



## Direction For Use



The right way to mix is to add the powder to water, not water to the powder. The ratio of the powder should be 1:1.3.



Avoid mixing more powder that can be used within 15 minutes.



Do not temper or mix fresh material once a mix has started to set.



After taking the required amount of plaster, always fold the open end, to protect the plaster from moisture.



Setting time cannot be altered by diluting the mixture with water. For a longer setting time, the BUILDON retarder should be added.



## Features



Single coat application



Can be applied directly on all walls/surfaces



Zero maintenance



Very smooth finish



Free from shrinkage cracks



Compatible with all types of paints

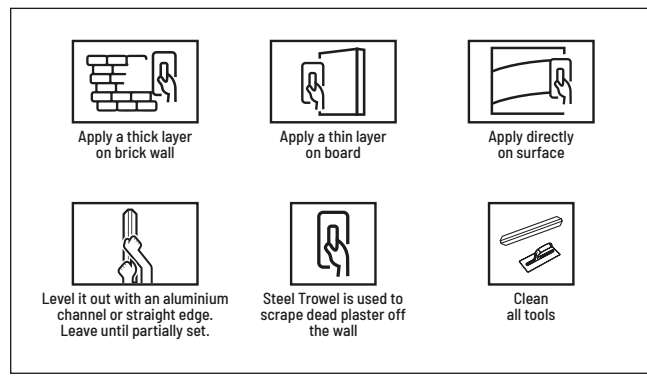


## Technical Specifications

|                            |   |
|----------------------------|---|
| Purity                     | 85% and above                             |
| Whiteness                  | 85%                                       |
| Finess Mesh                | Mesh 150,<br>Residue 2%                   |
| Setting Time               | Intial 12 - 15 min.<br>Final 24 - 30 min. |
| Compressive Strength (Dry) | 15 N/mm2                                  |
| Coverage at 12mm thickness | 20 Sq. ft.                                |
| Dry Bulk Density           | 690 Kg / m3                               |
| Standard Compliance        | IS 2547-1 Part 1 & Part 2                 |
| Shelf Life                 | 8 months                                  |

**Storage & Handling:** Imported Gypsum Plaster is supplied in 25kg bags. The Bags can be stacked on a Pallet in a dry area. Do not use hooks or any sharp tools to carry the bags from one location to another.

## Application Process



Approved by



**Buildon Plasters Pvt. Ltd.**

3B, Mapkhan Compound, Mapkhan Nagar, Marol Maroshi Road, Andheri (E), Mumbai-400 059. Ph: 022 - 29200565/29200569

**E-Mail:** [info@buildon.co.in](mailto:info@buildon.co.in) | **Web:** [www.buildon.co.in](http://www.buildon.co.in)

Maharashtra | Karnataka | Tamil Nadu | Telangana  
West Bengal | Kerala | Gujarat | Delhi | Goa | Madhya Pradesh